

290.00 mm

210.00 mm

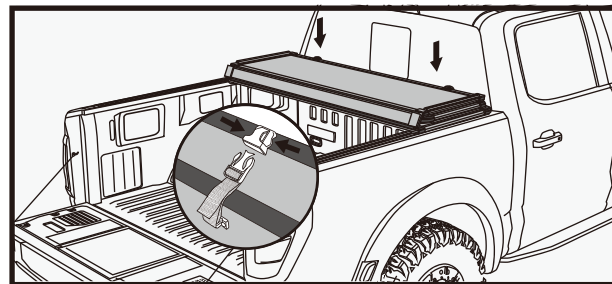
INSTALLATION SHEET

3-FOLD

Part List		
× 1	Clamp Foam Pad	
× 1	Front Seal Strip(For Some Trucks)	
× 1	Tailgate Seal Strip	
× 2	Spare Plastic J-Hook	
× 2	Spare Clamp Cross Joint	
× 4	M6 Nut Column	
× 2	Rear Clamp Handle Set	
× 1	Spare Plastic Buckle	
× 4	Mounting Block(For Toyota/Nissan Only)	
× 1	Allen Wrench(For Toyota/Nissan Only)	

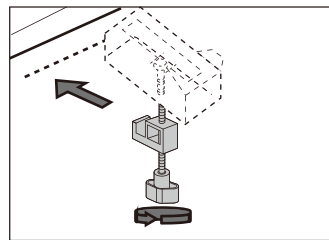
Step2:

1. Place cover assembly on both side of front truck bed rail against the cab.
2. Release safety buckles.



Step4:

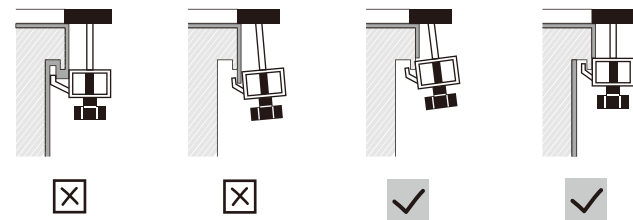
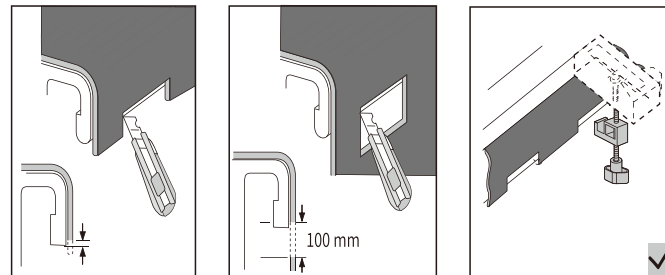
1. Pull down the front clamp to vertical position.
2. Loosen the knob and slide front clamp to bed rail.
3. Stick the clamp pad to mounting position on bed rail.
4. Hook the J-shaped clamp under the metal bed rail lip and tighten the knob.



Note:

Hand tighten only, do not over tighten.

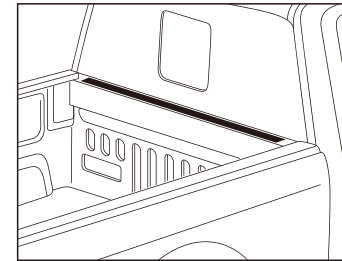
Cutting the bedliner is necessary.
The clamps may not precisely vertical.



The clamps may not precisely vertical

Step1:

1. Clean the bulkhead and bed rail before installation
2. Some truck's front bed railings are lowered. You need to stick sealing strips on the bed railings before installing the cover.



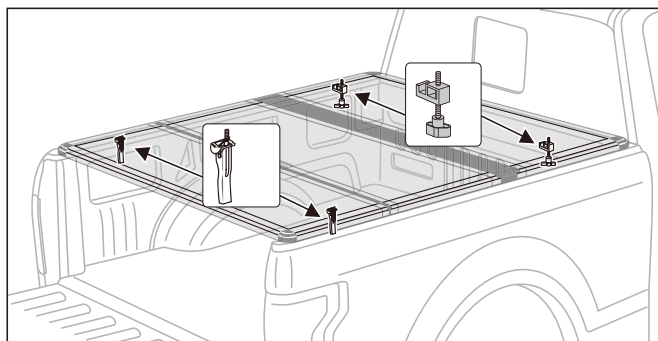
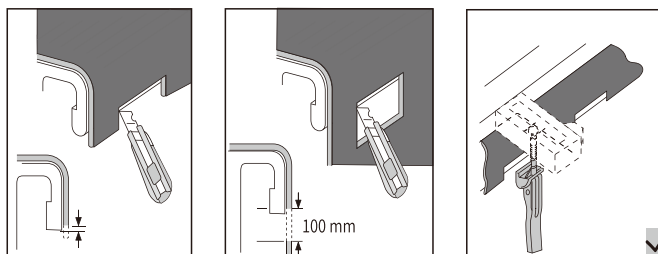
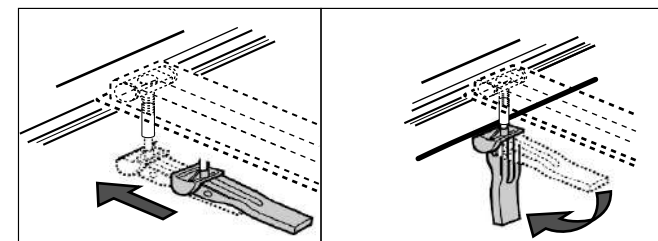
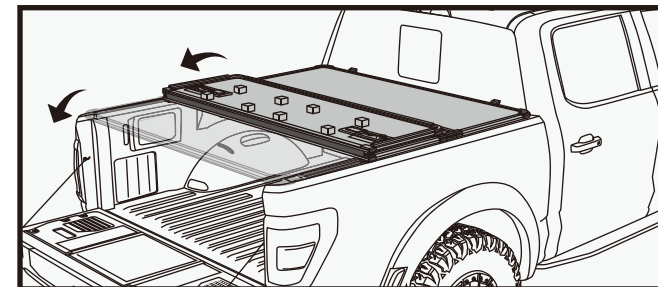
Step3:

Fully unfold the cover and secure the rear clamp.

1. Pull down the rear clamp to vertical position.
2. Slide rear clamp to bed rail.
3. Stick the clamp pad to mounting position on bed rail.
4. Turn the clamp handle to adjust rear clamp to proper length.
5. Hook the J-shaped clamp under the metal bed rail and push the clamp handle to vertical position.

Note:

The clamps may not be precisely vertical.

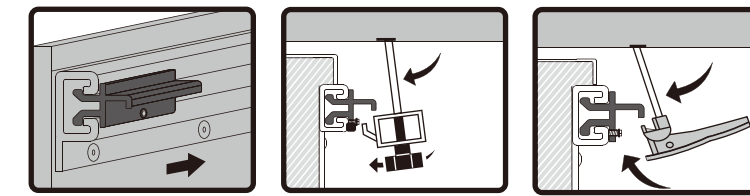
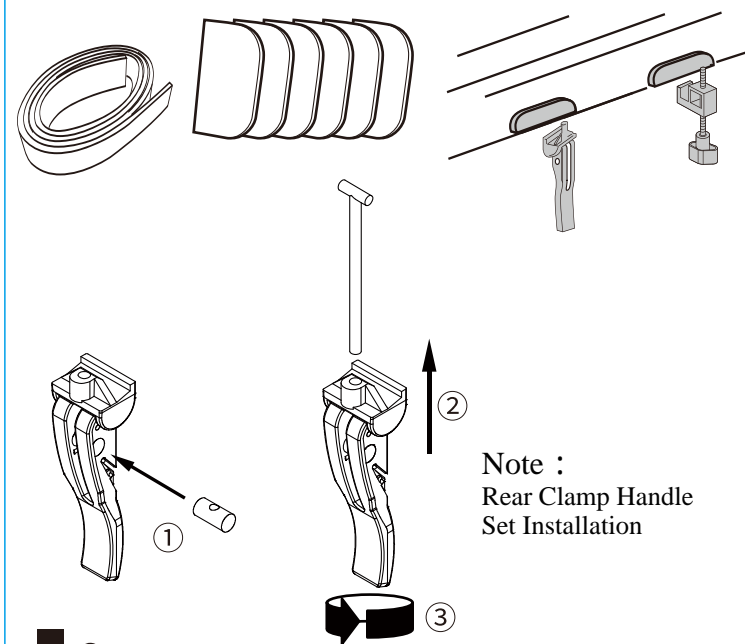


INSTALLATION SHEET

3-FOLD

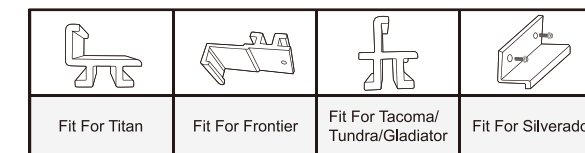
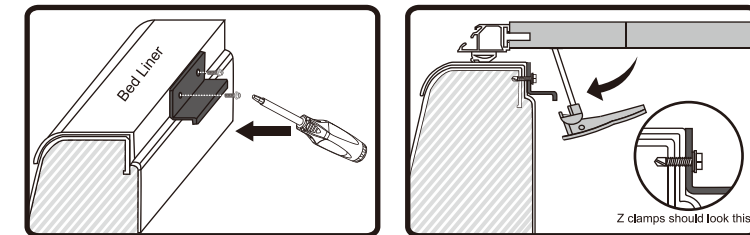
Step5:

1. Seal the taigate with seal foam strip
2. Stick the front sealtrip on the front of bed rail.



NOTE

how to install extra bracket for Chevy



Fit For Titan

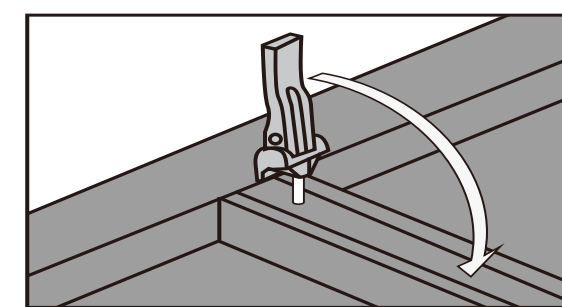
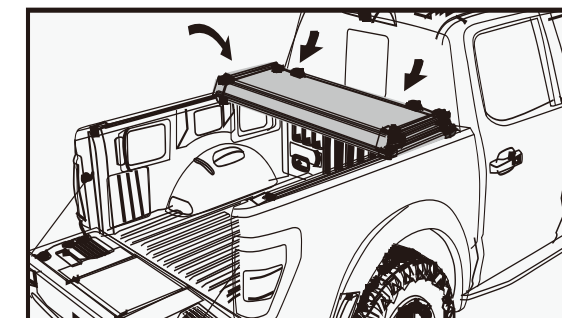
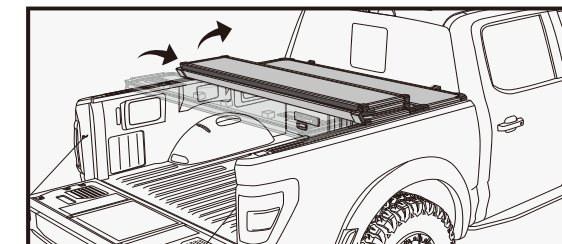
Fit For Frontier

Fit For Tacoma/
Tundra/Gladiator

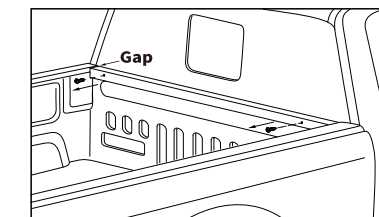
Fit For Silverado

Step6:

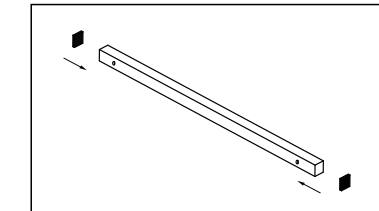
1. Fold up the cover
2. Open the tailgate and release the rear clamps.
3. Fold up the first panel.
4. Fold and secure the rear clamps back to original position.



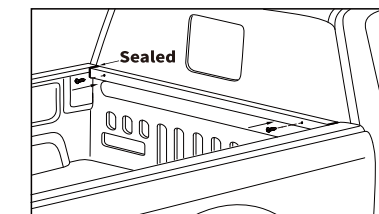
Sealing Instruction for Tacoma Trucks:



1. Remove two screws securing the bulkhead bar.



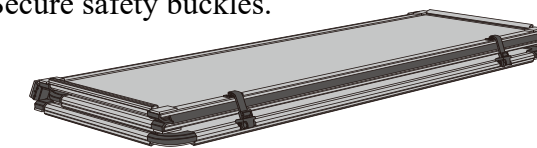
2. Stick the seal pads on both ends of bar.



3. Install the bulkhead bar back to truck.

Step7:

1. Fold up the second panel.
2. Secure safety buckles.



Please check clamps and secure straps are tight.